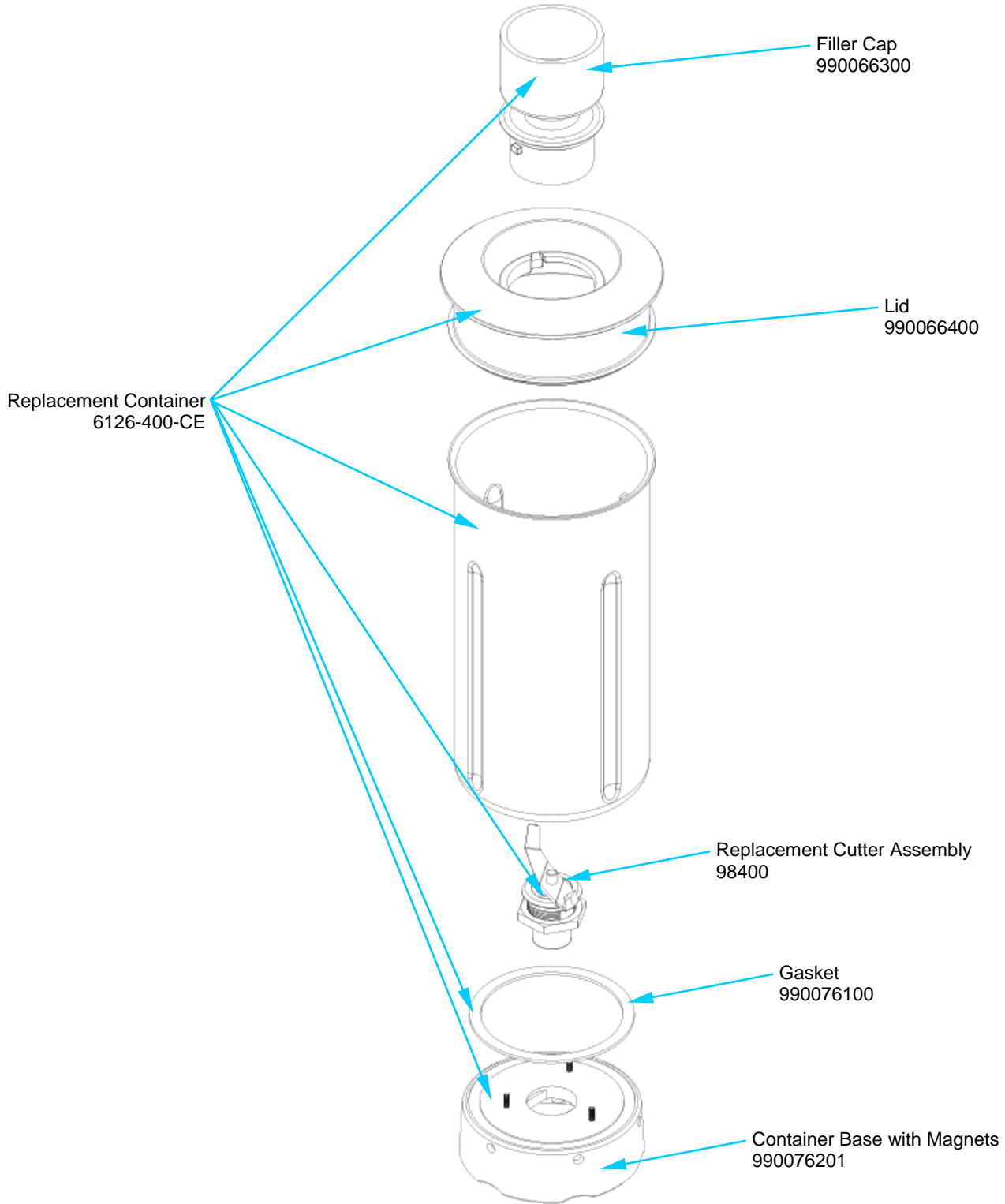



Exploded View Drawing
Model HBF400-CE

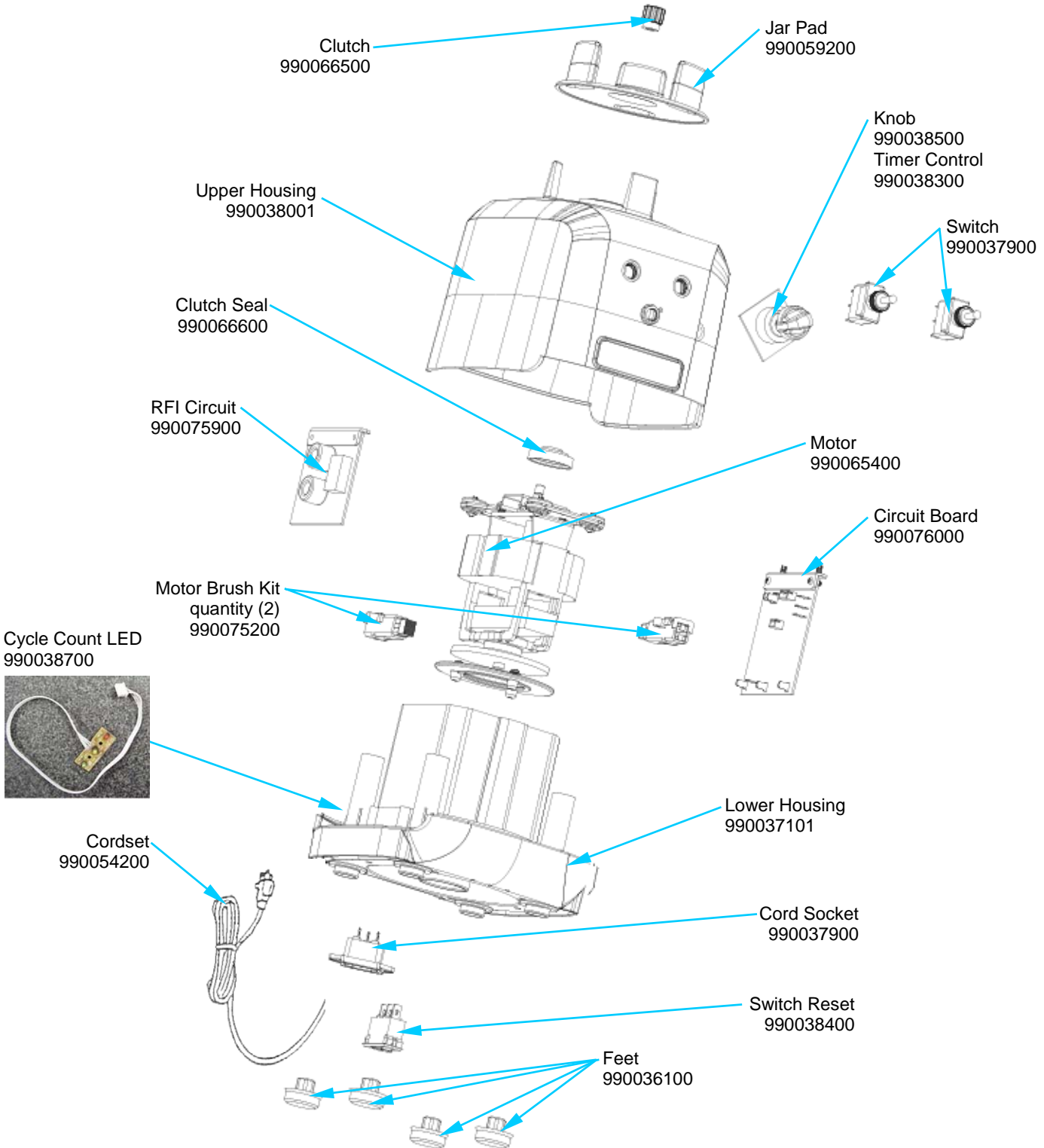
PROPRIETARY RIGHTS NOTICE This document and all information contained within it is the property of Hamilton Beach Brands, Inc. (HBB). It is confidential and proprietary and has been provided to you for a limited purpose. It must be returned or destroyed upon request. Disclosure, reproduction or use of this document and any information contained within it, in full or in part, for any purpose is forbidden without the prior written consent of HBB. No photographs may be taken of any article fabricated or assembled from this document without the prior written consent of HBB.




 4421 Waterfront Drive Glen Allen, VA 23060	Revision Description:	ADDED 990038700.						
	Request Number:	CME-2713	Revision Date:	09/03/08	Approved by:			
	Issue Code(s):	SP, CS	Page:	1 of 2	Document #:	5400011XX	Rev:	B

Exploded View Drawing Model HBF400-CE

PROPRIETARY RIGHTS NOTICE This document and all information contained within it is the property of Hamilton Beach Brands, Inc. (HBB). It is confidential and proprietary and has been provided to you for a limited purpose. It must be returned or destroyed upon request. Disclosure, reproduction or use of this document and any information contained within it, in full or in part, for any purpose is forbidden without the prior written consent of HBB. No photographs may be taken of any article fabricated or assembled from this document without the prior written consent of HBB.



 4421 Waterfront Drive Glen Allen, VA 23060	Revision Description:		ADDED 990038700.					
	Request Number:	CME-2713	Revision Date:	09/03/08	Approved by:			
	Issue Code(s):	SP, CS	Page:	2 of 2	Document #:	5400011XX	Rev:	B